

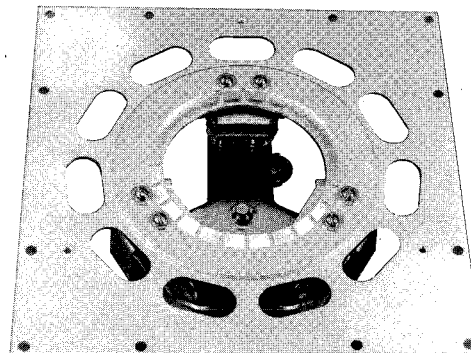


TECHNICAL DATA

SK-840 AIR SYSTEM SOCKET

The EIMAC SK-840 Air-System socket is recommended for use with the 5CX1500A and 5CX1500B power pentodes. Contact is made to all the tube elements except the anode. A companion air chimney, the SK-806, is available. With a pressurized chassis the cooling air passes through the socket and is then guided to the anode cooling fins of the tube by the chimney, thus assuring cooling of the tube base, the tube envelope and then the anode.

Air-cooling requirements for the two tubes will vary with frequency, anode dissipation level, and altitude; the EIMAC TECHNICAL DATA sheet for the tubes should be consulted for detailed information.



BASE CONNECTION

The socket has contacts for each tube electrode except the anode, as shown on the outline drawing, and an integral screen-grid bypass capacitor. The contacts for the filament, control grid and screen grid are spring-finger type which the breech-lock tabs on the base of the tube engage when it is inserted and rotated into place against the stop-pin. The suppressor-grid ring of the tube automatically contacts the spring fingers of the circular ring provided at the top of the socket, thereby grounding this element to the top mounting plate.

SCREEN-GRID BYPASS CAPACITOR

An integral 2500 pF screen-grid bypass capacitor rated at 1000 DCWV maximum is included. A silicone rubber material is used to seal the unit against entrance of dirt or moisture. The capacitor bypasses the screen grid of the tube to the top mounting plate.

MATERIALS AND FINISHES

The top mounting plate is silver-plated brass. The base is die-cast zinc, nickel plated. All contacts are silver-plated beryllium copper. The insulator-spacers used are of high-alumina ceramic. The two filament straps are silver-plated copper.

INSTALLATION

The socket must always be mounted so the tube is operated in a vertical position. A pressurized chassis or plenum chamber is recommended so cooling air passes in a base-to-anode direction through the socket/chimney/tube combination, then exhausts to atmosphere. Mounting may be below or above the chassis surface. The chassis cutout should be dimensioned so the eleven air holes in the mounting plate are not blocked and the three 6-32 tapped holes, set 120° apart for mounting the SK-806 chimney, are accessible.

NET WEIGHT

SK-840 Socket (Approx)	1.5 lb; 0.7 kg
SK-806 Chimney (Approx)	0.6 lb; 0.27 kg

MAINTENANCE PARTS

If repair or maintenance of the SK-840 is required the various component assemblies and parts are available. A cross-section drawing is included in this data sheet for replacement parts identification. The drawing is a view of the socket showing all individual parts or assemblies with the EIMAC part number and the quantity used in the socket. PartsKit840 is available and contains the component parts listed at the right.

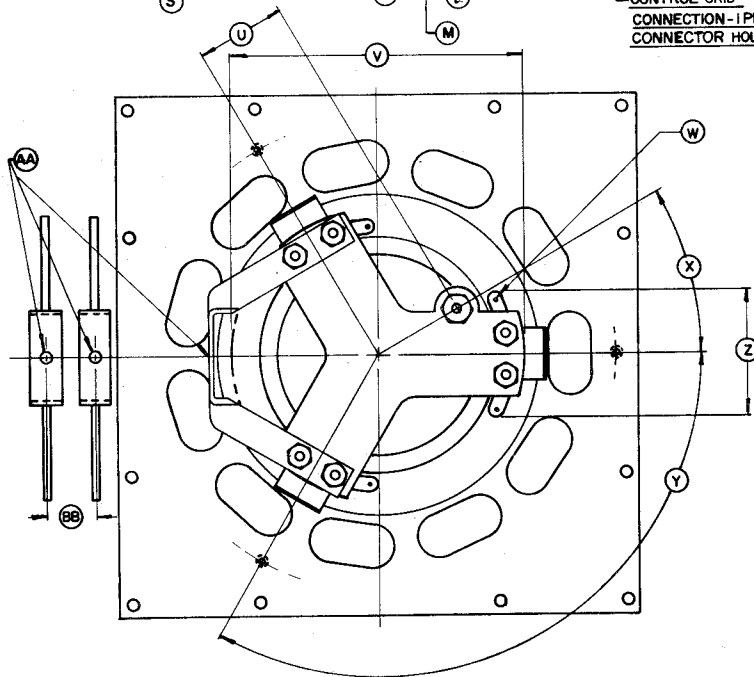
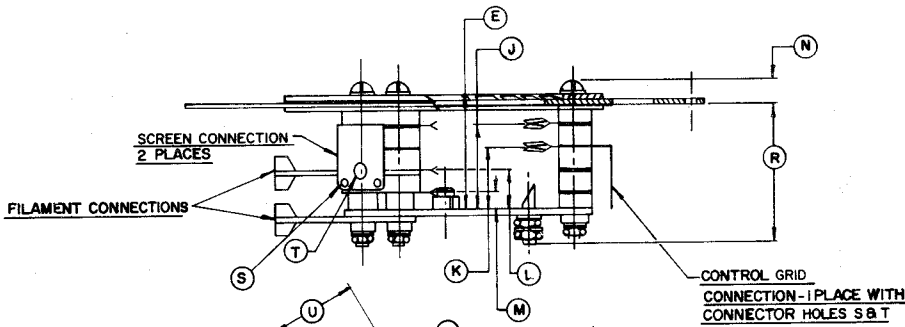
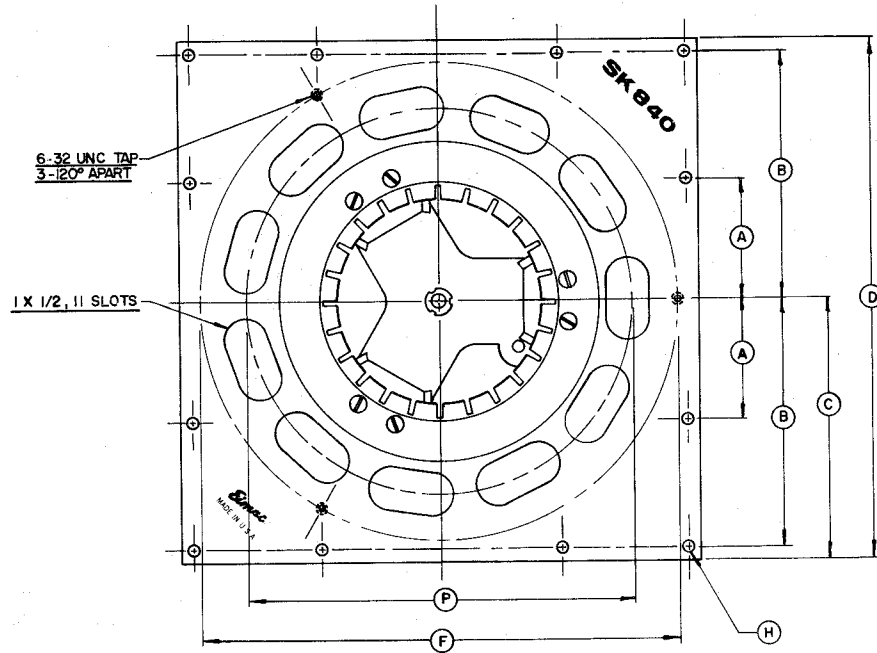
Socket Part	Quantity	EIMAC P/N
Contact Finger	8	149062
Ceramic Cylinder	2	011637
Bushing	6	011639
Ceramic Spacer	1	115969
Ceramic Spacer	2	011920
Ceramic Spacer	3	011638
Metal Spacer	1	115513
Insulator (inner)	2	149548
Contact Finger	1	149068

400536(Effective May 1985)
VA4734

Printed in U.S.A.



SK-840



DIMENSIONS IN INCHES

DIMENSIONAL DATA

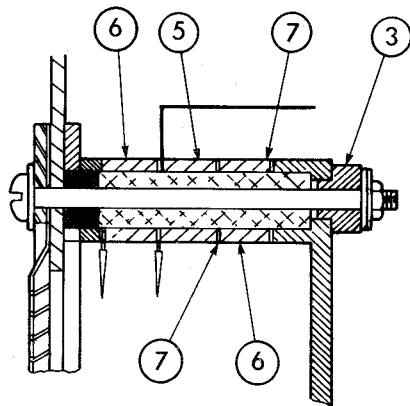
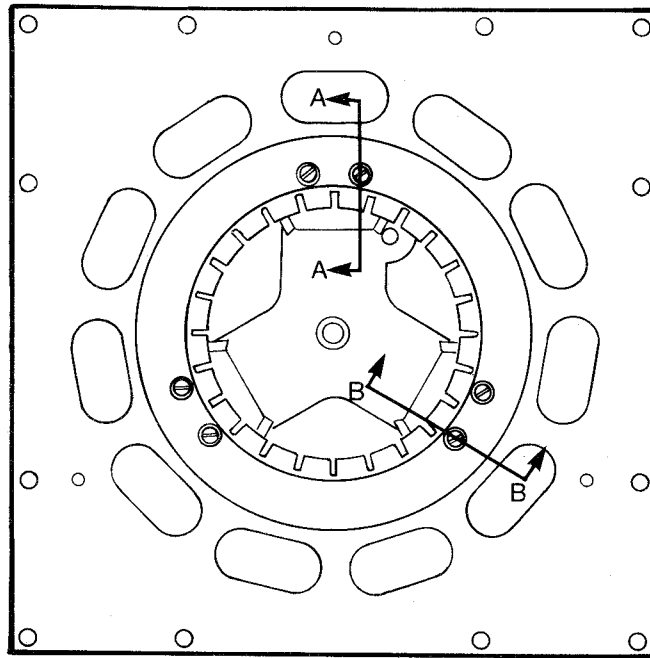
DIM.	MIN.	MAX.	REF.
A	1.386	1.426	
B	2.886	2.926	
C	3.042	3.082	
D	6.084	6.164	
E	1.245	1.295	
F	5.575	5.615	
H	.140	.172	
J	.960	.990	
K	.710	.745	
L	.415	.470	
M	.160	.190	
N	.228	.248	
P	4.469	4.531	
R			1.565
S	.078	.108	
T	.156	.186	
U	1.042	1.082	
V	3.390	3.450	
W	.069	.075	
X	28°	32°	
Y	118°	122°	
Z	1.468	1.531	
AA	.193	.213	
BB	.530	.570	

NOTES

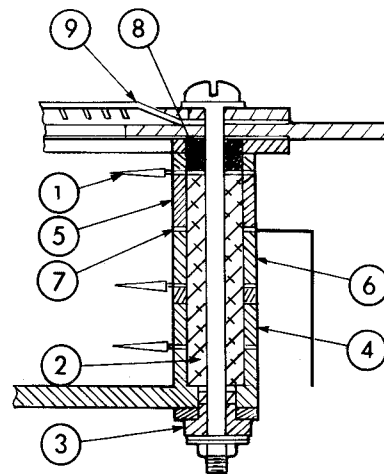
- SCREEN GRID VOLTAGE: 2400 VDC
TEST. SCREEN GRID CAPACITANCE
2500 ± 20% PF
- SUPPRESSOR GRID GROUNDED.
- MAT'L. SPECS.
MTG. PLATE: BRASS, SILVER PLTD.
BASE: DIE CAST ZINC, NICKEL PLTD.
CONTACTS: HEAT TREATED BERYL.
COPPER, SILVER PLTD.
INSULATION CERAMIC.
CAPACITOR SEALANT: SILICONE
RUBBER.
DIELECTRIC: SILVERED RUBY MICA
FASTENERS: BRASS NICKEL PLTD. OR
STAINLESS STEEL.
FILAMENT STRAPS: COPPER SILVER
PLTD.
- REF DIM. ARE FOR INFO. ONLY AND
ARE NOT REQ'D. FOR INSPECTION
PURPOSES.

REPLACEMENT PARTS FOR MAINTENANCE
SK-840

PART #	DESCRIPTION	QUANTITY	PART #	DESCRIPTION	QUANTITY
1 149062	Contact Finger	8	6 011638	Ceramic Spacer	3
2 011637	Ceramic Cylinder	2	7 115513	Spacer	1
3 011639	Ceramic Bushing	6	8 149548	Inner Insulator	2
4 115969	Ceramic Spacer	1	9 149068	Suppressor Grid	1
5 011920	Ceramic Spacer	2		Contact Fingers	



SECTION A-A



SECTION B-B
2 locations